

Clarke®

CONTRACTOR®



SITE BOXES
CSB25B, CSB5 & CSB100B

ASSEMBLY INSTRUCTIONS

INTRODUCTION

Thank you for purchasing this CLARKE Contractor Site Box.

Any deficiencies found should be reported to your CLARKE dealer where the product was originally purchased.

Do not dispose of damaged components or packaging with general household waste. They should be taken to a recycling centre and disposed of appropriately.

WEIGHTS & DIMENSIONS

	CSB25B	CSB85B	CSB100B
Part No	7637451	7637471	7637503
Weight	25.09kg	43.27kg	57.34 kg
Dimensions	815 x 485 x 360mm	1070 x 515 x 600mm	1220 x 615 x 725mm
Capacity	110L	210L	370L
Sheet thickness	1.6mm	2.5mm	2.5mm

ADDING CASTORS

The castors ML525S, ML525R and ML525-1 are obtainable separately from your CLARKE dealer and are compatible with the CSB85B and CBS100B site boxes. We recommend that one pair of castors are fitted with brakes.

There are no holes drilled into the base of the CBS25B, therefore no castors can be fitted.

SAFETY WARNINGS

Take care never to trap fingers when closing the lid or to pinch fingers between the folding side handle and the side of the box.

When fitting castors, obtain the help of an assistant due to the weight of the box.

DO NOT lift the site box by the side handles if fully loaded.

If heavily loaded, lift and move the site box using the fork truck /fork lift tine insertion points provided.

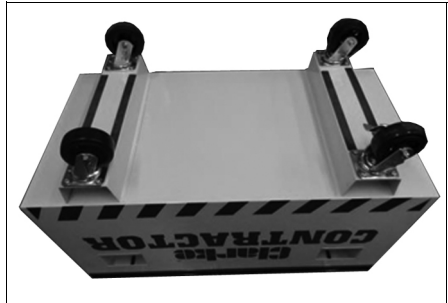
ASSEMBLY

The following castors are available from your CLARKE dealer.

- ML525S (Swivel) Part No 4200165
- ML525R (fixed) Part No 4200190
- ML525-1(braked) Part No 4200140

Carefully turn the site box upside down using some soft material such as carpet to protect the surface.

Attach the castors using bolts, nuts and washers as illustrated.



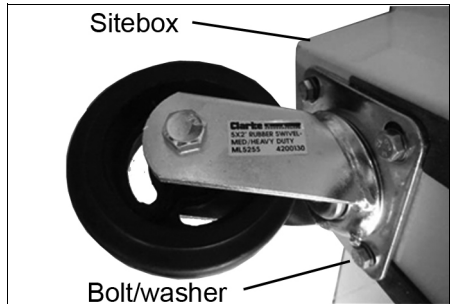
Line up the castor plate with the holes in bottom of site box.

Slide a bolt through the washer and castor plate and into the site box frame. Tighten with a spanner, using a second spanner to lock the nut.

Repeat for the remaining bolts and castors.

Secure your site box with a good quality padlock through the attachment points provided.

NOTE: Suitable padlocks are available from your CLARKE dealer.



GUARANTEE

This CLARKE product is guaranteed against faulty manufacture for a period of 12 months from the date of purchase. Please keep your receipt as proof of purchase.

This guarantee is invalid if the product is found to have been abused or tampered with in any way, or not used for its intended purpose. Faulty goods should be returned to their place of purchase, no product can be returned to us without prior permission.

This guarantee does not effect your statutory rights.

A SELECTION FROM THE VAST RANGE OF

Clarke®

QUALITY PRODUCTS



AIR COMPRESSORS
From DIY to industrial. Plus air tools, spray guns and accessories.

GENERATORS
Prime duty or emergency standby for business, home and leisure.

POWER WASHERS
Hot and cold, electric and engine driven - we have what you need

WELDERS
Mig, Arc, Tig and Spot. From DIY to auto/industrial.

METALWORKING
Drills, grinders and saws for DIY and professional use.

WOODWORKING
Saws, sanders, lathes, mortisers and dust extraction.

HYDRAULICS
Cranes, body repair kits, transmission jacks for all types of workshop use.

WATER PUMPS
Submersible, electric and engine driven for DIY, agriculture and industry.

POWERTOOLS
Angle grinders, cordless drill sets, saws and sanders.

STARTERS/CHARGERS
All sizes for car and commercial use.



**PARTS & SERVICE:
0208 988 7400**

Parts Enquiries
Parts@clarkeinternational.com

Servicing & Technical Enquiries
Service@clarkeinternational.com

SALES: UK 01992 565333 or Export 00 44 (0)1992 565335

Clarke® INTERNATIONAL Hemnall Street, Epping, Essex CM16 4LG
www.clarkeinternational.com